

# KONDOR™

Touchless Automatic Product Suite - For Every Bay & Budget



## KL2

Starting at  
**\$60,935**

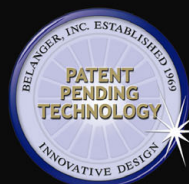
## High-Flying Performance. Down-To-Earth Pricing.

The new Belanger Kondor™ KL2 (Two-Arm Touchless Automatic) showcases the sleek design of the Kondor™ platform within a two-arm format. This two-arm design helps further increase the navigational certainty of users, while allowing simultaneous chemical application and rinsing. The compact carriage head and narrow overhead travel rails contribute to installation options for almost every bay size.

**What's more, every Kondor™ is built to impress.** The narrow overhead rails form an 'inverted runway' that helps drivers get in position. The compact carriage head helps users feel safer, and eases diagnostic and service procedures from just two ladder positions. The KL2's Auto-Resetting Breakaway Arms reset themselves without intervention. An optional stainless steel carriage frame is also available.

**The Kondor™ is designed to clean, and built to keep cleaning.** That's why every Kondor™ includes essential solution delivery injectors – including two presoaks and a wax application. Additional application options include Triple Foam, Spot-Free Rinse, other waxes, and bug spray. The galvanized travel rails and 25HP motor with CAT 35/35 Pump help ensure an extended service life and ROI.

**Increase appeal with branding options and functional lighting.** Available white carriage housings and colored branding panels with custom logos are perfect for site branding. Optional 'Active Site Marketing' Wing Covers cycle through 6 backlit colors to attract customers off the street and onto your site. And the available LED Navigation System illuminates both wash arms with RGB color changing lights to help drivers quickly position their vehicles.



Call **Allen Luce**  
**248-866-0644**  
[aluce@Belangerinc.com](mailto:aluce@Belangerinc.com)

## Trim Levels

### Kondor™ KL2 Trim Level A

- Grey Composite Carriage Enclosure
- Black Vertical Arm Covers
- High Speed Production Arch



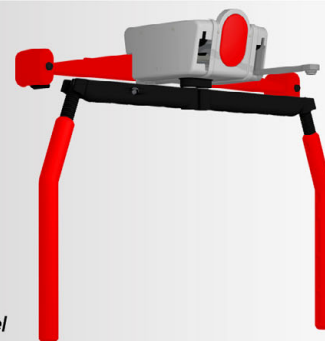
### Kondor™ KL2 Trim Level B

- Grey Composite Carriage Enclosure
- Black Vertical Arm Covers
- Grey Composite Wings
- Triple Foam System
- High Speed Production Arch



### Kondor™ KL2 Trim Level C

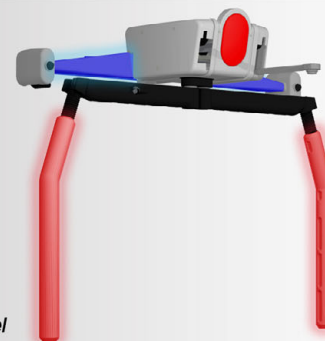
- White Acrylic Carriage Enclosure
- Colored (Blue, Red, Green, Orange, or Yellow) Vertical Arm Covers
- Colored Wings
- Triple Foam System
- High Speed Production Arch



*\*Shown with optional Branding Panel*

### Kondor™ KL2 Trim Level D

- White Acrylic Carriage Enclosure
- Illuminated Vertical Arms w/LED Navigation System
- 6 Color 'Active Site Marketing' Package for Wings
- Triple Foam System
- High Speed Production Arch



*\*Shown with optional Branding Panel*

For complete system options and pricing visit: [www.Belangerinc.com/kondor-build-a-wash](http://www.Belangerinc.com/kondor-build-a-wash)